

IP Power 9268

User Manual



Firmware Version: 1.3
Date Released: 06/16/2009

Warning: Any changes made to this equipment without permission may cause damages to the device!

IMPORTANT NOTICE

1. IP Power 9268 was designed for indoor use, we carry no responsibility for possible damages caused by outdoor use, especially in the rain.
2. Please use the power adapter provided by the dealer, we carry no responsibility for the possible damage from using power adapters not .
4. Do not shake the IP Power 9268 in any fashion
5. Please contact the dealer If IP Power 9268 is not working properly.

Copyright © 2008 All rights reserved. No part of this publication may be reproduced, stored in a retrieval system, or transmitted in any form or by any means, electronic, mechanical, photocopying, recording or otherwise, without the prior written consent of us. All trademarks and products mentioned in this document are the properties of us.

Table of Content

1.) WELCOME	5
Introduction	5
Minimum System Requirements	5
2.) PRODUCT OVERVIEW	6
Features	6
Specification	6
Package Contents	7
Package Contents	7
3.) INTERFACE DESCRIPTION	8
9268-M (Master)	8
9268-PR (Power Receiver)	9
4.) SETTING UP THE IP POWER 9268	11
Step 1: Setting up the Hardware	11
Step 2: Setting up the device with IP Edit	11
Step 3: Setting up the 9268-PR RF settings	12
Step 4: Accessing the device from outside the network	14
5.) HARDWARE INTERFACE	15
Controlling the Device Manually through the 9268-M	15
Reset to Default values	15
Replacing the Fuse	17
6.) WEB INTERFACE	17
Log In to IP Power 9268	17
Logging In	18
Main Screen	18
Control Center	19

Control Center	19
RF Control Panel:	20
System Configuration.....	21
RF Setup	21
System Setup	22
DDNS Setup	23
Email Setup.....	24
Change Password.....	25
Firmware Update	25
System Log	26
Change Time.....	26
Logout.....	26
7.) FREQUENTLY ASKED QUESTIONS (F.A.Q).....	27

1.) Welcome

Introduction

The IP Power 9268 is a state of the art Power Distribution Unit (PDU) & Remote Power Control (RPC) system. The various applications of the 9268 includes: Power Management, System Integration, Remote Power Control in Remote locations, & etc.

The 9268 allows you to control up to 4 separate devices remotely via the internet using a web browser, you can control the power to your devices from virtually anywhere.



Minimum System Requirements

CPU Minimum Requirements

CPU Processor: The same as or above a Intel Pentium III or AMD Athalon

Operating Systems: WINDOWS Operating Systems (IE5.0+SPI) & LINUX

Memory Requirements 64MB or More

Supports Direct Draw Graphics Card

RJ45 LAN & Internet HUB & Switch

Internet (For remote access) or Ethernet Network (Internal Network use) with some type of Internet connection, (i.e. ADSL, Cable, Dial up or any other forms of Internet service)

2.) Product Overview

Features

1. One Master Connects 4 Receiver devices
2. Each slave device can connect up to a distance of 30 - 50 Meters
3. Email Capabilities
4. Supports: TCP/IP, Http API, Web Server, SMTP Server, DDNS, Log file, CNT, XML
5. Customize the name of each device and each port of each device
6. Remote controller on Master device for local control
7. Base 64 Password Encryption
8. Log Capability
9. Bi-Directional safety control communication for device status retrieval.
10. CNT Technology: No Port Forwarding Needed in Router – Just Plug & Play
11. IP Service: Easily Find your device on the internet without having to remember complicated IP's
12. Compatible with IP Power Center Power Management Windows Software.

Specification

9268-M (Master)

1. Input DC: 5DC
2. Dimensions: 75 x 120 x 25 mm
3. Weight: 263.3 g
4. RF Frequency: 433/315 MHZ

9258-PR (Power Receiver)

1. Input Power Voltage 90-240 VAC
2. 4 Power Outlets
3. Dimensions: 115 x 260 x 45 mm
4. Weight: 923.4 g
5. RF Frequency: 433/315 MHZ

* For **220-250V**, please use power cable that can support 10A current.
Max. Output current: (total of each four outlets) 10A, (each outlet) 6A.

* For **100-120V**, please use **power cable that can support 15A current**.
Max. Output current: (total of each four outlets) 15A, (each outlet) 6A

Package Contents

Package Contents	
1.) 9268-M (Master) Unit x 1	 <p>The image shows a black, rectangular IP POWER 9268-M Master Unit. It features a silver antenna on top. The front panel has a 'Device Reset' button, four indicator lights labeled 1, 2, 3, and 4, and a power button.</p>
2.) 12V 1A Power Adapter	
2.) 9268 PR (Power Receiver) Unit x 4	
3.) Antenna Unit x 5	 <p>The image shows a single black antenna unit, which is a long, thin, cylindrical rod.</p>
2.) 9268 Installation CD	 <p>The image shows a CD-ROM with a dark blue cover. The text on the CD includes 'Master Line-IP Family' and 'IP Camera, IP Video, IP Power, IP Sensor'.</p>
4.) RJ45 Cable x 1 (Optional)	
5.) Input Power Cable (Optional)	 <p>The image shows a black power cable with a standard two-prong AC power plug and a connector for the power adapter.</p>

3.) Interface Description

9268-M (Master)

Front View



1.) 9268 PR Device Selection:

The PR Device Selection

2.) 9268 Reset:

To reset to original manufacture settings, hold down the reset button with a pen or a pin for 7 seconds or more.

The Default Values of the IP Power 9268 are

Default IP Address: 192.168.1.192

Default Login: admin

Default Password: 12345678

3.) Power Controls:

Once a 9268-PR (Slave) has been selected hit the 1, 2, 3, 4 buttons to active the outlets of the 9268-PR. When the power outlet is on the 9268 will light up the green LED.

4.) Ac Power:

The green LED will light up when the device is properly powered and plugged in

Rear View



1.) 9268-M Network Jack RJ45:

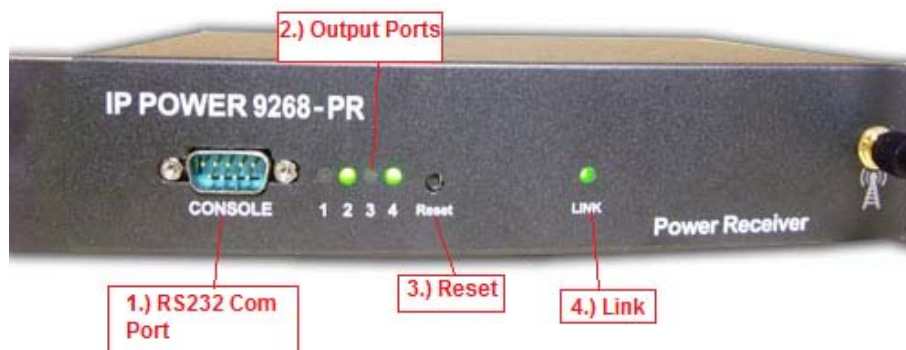
Connect the 9268-M to the Ethernet / internet through this jack

2.) 9268 Reset:

Use a DC 5V 1A Power Adaptor.

9268-PR (Power Receiver)

Front View



1.) RS232 Com Port

The RS232 Com Port is currently used by the manufacturer for debugging purposes

2.) Output Ports

The green LED lights will light up with the output has been turned on

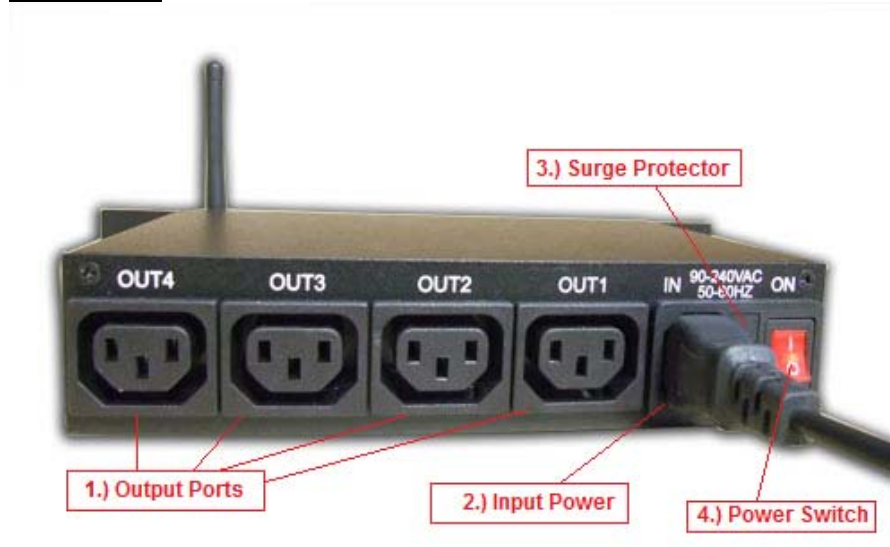
3.) Reset

The Reset button is used to setup the RF device. Please go to (RF Connection Setup) for more instructions

4.) Link

The link will show if the IP Power 9268-PR (Slave) is connected to the 9268-M (Master) device

Rear View



1.) Output Ports

Connect the devices that need to be controlled in the Output Ports.

2.) Input Power

The Input Power allows the 9268-PR to power up the devices.

3.) Surge Protector

In the case of a power surge, the fuse is located in the Surge protector.

4.) Power Switch

Power switch turns on or/off the IP Power 9268

4.) Setting up the IP Power 9268

Setting up the IP Power 9268:

Note:

For **220-250V**, please use power cable that can support 10A current.
Max Output Current: (total of each four outlets) 10A, (each outlet) 6A.

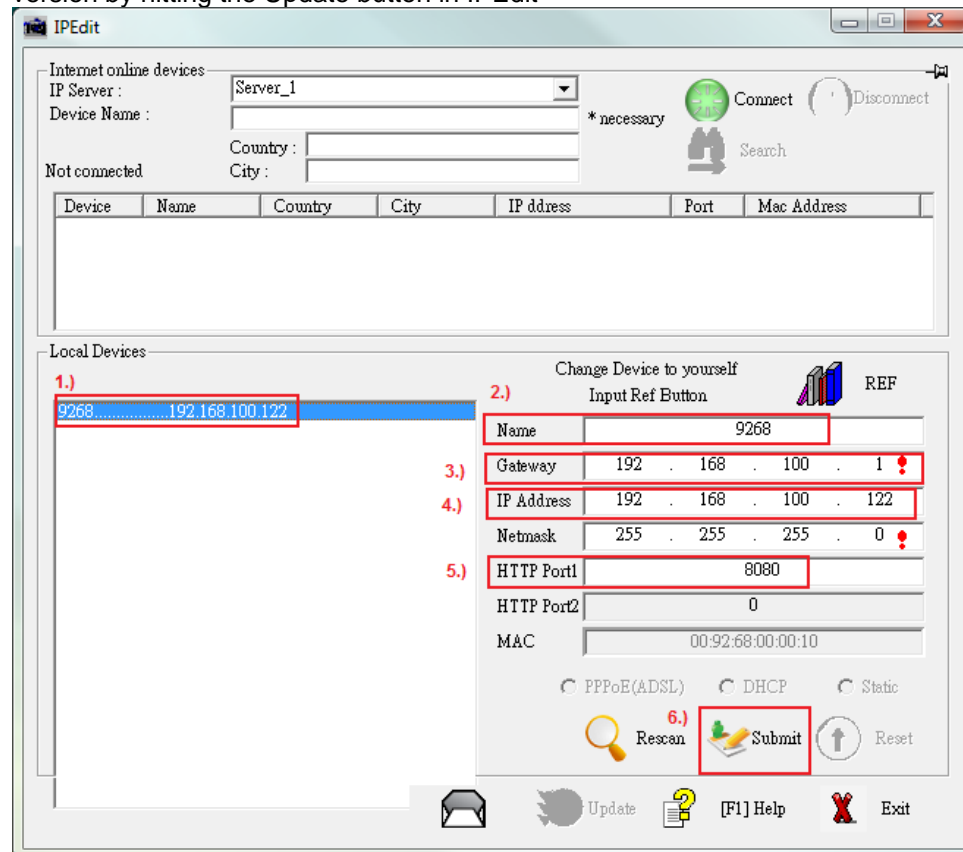
For **100-120V**, please use **power cable that can support 15A current**.
Max Output Current: (total of each four outlets) 15A, (each outlet) 6A

Step 1: Setting up the Hardware

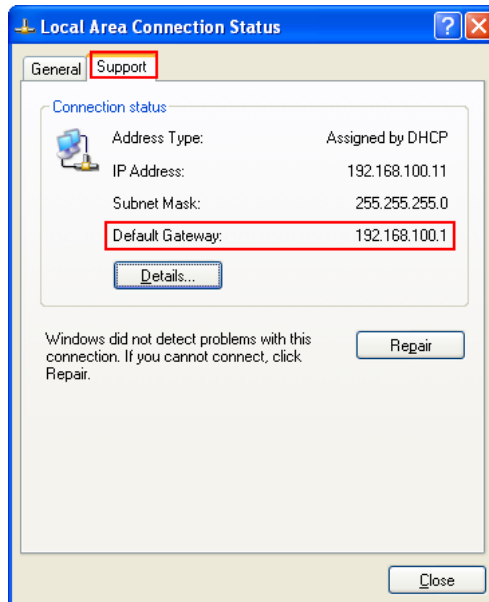
- 1.) Connect the IP Power 9268-M to a HUB or Router with a RJ45 network cable.
- 2.) Connect the HUB or Router to the internet (May through ADSL/XDSL modem).
- 3.) Connect the power adapter to the IP Power 9268-M (Master).

Step 2: Setting up the device with IP Edit

From the CD provided install IPedit Search Tool. Please update IPedit to the latest version by hitting the Update button in IPedit



- 1.) Once IPedit is open the device will automatically appear in the local devices section. Highlight the device and on the right side of IPedit the Fields will be populated with default information
- 2.) Type in a Name for the device
- 3.) Type in the network gateway (I.E Router Gateway, Hub). This information can be found in your network settings.



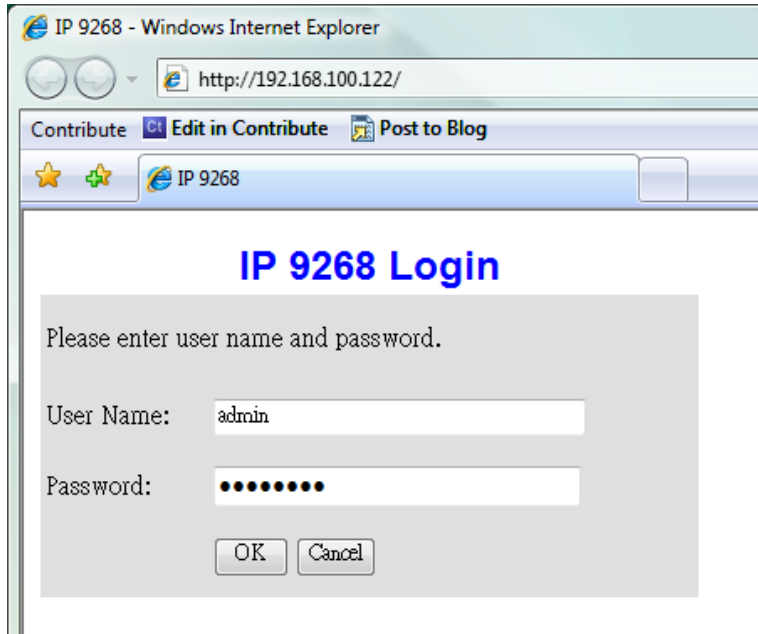
- 4.) Type in the IP Address of the device.
- 5.) Select a Port number other than 80 to avoid conflicts with other hardware
- 6.) Once all settings have been entered correctly, hit the submit button to save all changes.

Step 3: Setting up the 9268-PR RF settings

Once all the settings have been entered then it is time to setup the 9268-PR (slave) boxes. To setup the boxes it is recommended to have the box stay near the computer you will be using to setup the device.

Follow the following steps:

- 1.) First connect the power cable to the 9268-PR (slave) and turn on the power.
- 2.) Then hit the reset button on the 9268-PR to start the recognition process. The 9268-PR will start to make "Beeping sounds"
- 3.) Then Open IPedit double click on your device in the local Area section. Or enter the IP Address of your device into Internet Explorer.
- 4.) Login to the IP Power 9268-M



The Default Values of the IP Power 9268:

IP Address: 192.168.1.192

Login: admin

Password: 12345678

- 5.) After logging into the device Select the **RF Setup** link

IP Power 9268

Control Center
[RF Control](#)

System Configuration

- [RF Setup](#)
- [System Setup](#)
- [DDNS Setup](#)
- [Email Setup](#)
- [IP Service](#)
- [Change Password](#)
- [Firmware Update](#)

System Log
[System Log](#)

Internal Time:
[Change Time](#)

[Logout](#)

RF Setup

Transmitter Setup Information		
Transmitter ID	Operating Frequency	Group Address
000010	430.0MHz	0x55 0xAA

RF Signal Setup			
Access Number	Receiver Name	Receiver ID	
Receiver 1	<input type="text"/>	<input type="text"/>	GetID1 Clear1
Receiver 2	<input type="text"/>	<input type="text"/>	GetID2 Clear2
Receiver 3	<input type="text"/>	<input type="text"/>	GetID3 Clear3
Receiver 4	<input type="text"/>	<input type="text"/>	GetID4 Clear4

Apply Cancel





- 6.) While the 9268-PR is still beeping hit the **GetID** button.

Example:

If you want the device to be in **Receiver 1** Select **GetID1**

RF Signal Setup			
Access Number	Receiver Name	Receiver ID	
Receiver 1	<input type="text"/>		GetID1 Clear1
Receiver 2	<input type="text"/>		GetID2 Clear2
Receiver 3	<input type="text"/>		GetID3 Clear3
Receiver 4	<input type="text"/>		GetID4 Clear4
		Apply	Cancel

7.) Once the device has been setup click on RF control link to left of the page to check to make sure the device has been connected.

Receiver Control Center				
Access Number:	1	2	3	4
Receiver Name:				
Receiver ID:	000001	000002	000003	000004
Status:	On	On	On	On
Control Center:				

Step 4: Accessing the device from outside the network

Note:

To access the device from outside of the network you must port forward, port triggering, the routers that is being used to connect the device. Please refer to the routers manual since each routers settings are setup differently.

For example our device above has the following information

IP Address: 192.168.100.122

Port: 8080

On the routers side you will need to port forward / port trigger this information so that it can be accessed from outside the network.

5.) Hardware Interface

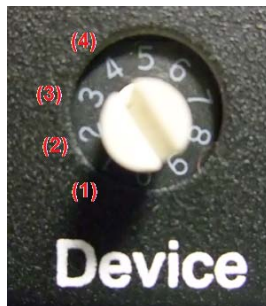
Controlling the Device Manually through the 9268-M

The 9268-M allows the device to remotely be controlled through the internet. It also has a remote feature which allows for local control of the 9268-PR (slave) devices.



To Control the 9268-PR devices:

- 1.) With Device Selection Knob and select the device you would like to control.



- 2.) Then press the Power Controls to control the power of outlets 1, 2, 3, or 4. The LED will light up if the power is on.

Reset to Default values

Resetting Values to Manufacturer Default

To reset to original manufacture settings on the IP Power 9268-M (Master), hold down the reset button with a pin or pen for 7 seconds or more.

The Default Values of the IP Power 9268:

IP Address: 192.168.1.192

Login: admin

Password: 12345678

“Super User” Password Reset

In an even where the password cannot be recovered, the “super user” password reset can be used

To reset the password:

IP 9268 Login

Please enter user name and password.

1.)
User Name:

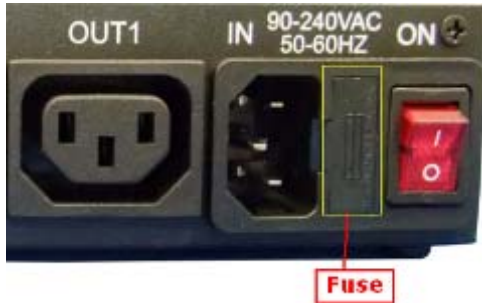
Password:

2.)

- 1.) Go to the login page of the device
- 2.) Type in the words “super user” without the quotations.
(There is a space between super and user.)
- 3.) Click the Ok button to confirm.
- 4.) Then Unplug and then plug in the device.

Replacing the Fuse

1.) The fuse is located on the 9268-PR (Slave) between the power switch and the power input plugs.

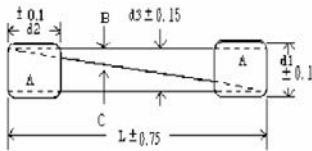


2.) Carefully remove the fuse holder with a flat screwdriver.



3.) The fuse can be purchased at most electrical stores

Model: U/C GFE 10A 250V (PF)



6.) Web Interface

Log In to IP Power 9268

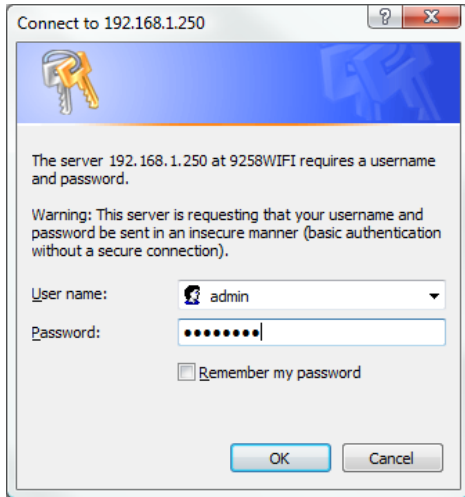
Once the 9268 has been setup correctly, log into the device.

First Option

- 1.) Go to IPEdit find the device that is being used
- 2.) Double click on the device link and a IE window will appear with the loading screen

Second Option

- 1.) Open Internet Explorer type in the IP Address of the device followed by the “:” sign.
For example: <http://192.168.122.188:9258>
192.168.122.188 – IP Address
9268 – Port
- 2.) Once you have typed in the address the 9268 is ready to use.



The default password for the 9268

Login: admin

Password: 12345678

Logging In

After the device has been configured it is time to login to the device via the web interface.

- 3.) Open IPedit
- 4.) Find the IP Power 9268 Device on the right hand side
- 5.) Double click on the IP Power 9268 and a Internet Explorer window will appear
- 6.)
- 7.)

Main Screen

After the device is logged in the following page will be displayed on the screen.

IP Power 9268

Control Center

[RF Control](#)

System Configuration

[RF Setup](#)

[System Setup](#)

[DDNS Setup](#)

[Email Setup](#)

[IP Service](#)

[Change Password](#)

[Firmware Update](#)

System Log

[System Log](#)

Internal Time:




[Change Time](#)

[Logout](#)

2009-06-12 17:50:15

Control Center

[RF Control](#)

Receiver Control Center				
Access Number:	1	2	3	4
Receiver Name:				
Receiver ID:	000002	000003	000004	-
Status:	On	On	On	NA
Control Center:				

Control Center

The Control center is where the 9268PR (slave) device(s) are controlled. From this screen each device can be controlled on/off.




Access Number: The access number is the number of the device listed

Receiver Name: Receiver name is the Name of the Power Receiver that is selected. If no name has been selected then it will be left blank

Receiver ID: Receiver ID is the physical address of the Power Receiver that is used by the 9268-M to identify the device

Status: The status on the 9268 will show the following:

[RF Control](#)

Receiver Control Center				
Access Number:	1	2	3	4
Receiver Name:	test1	test2	test3	
Receiver ID:	-	000003	000004	-
Status:	Off	On	On	NA
Control Center:				

On: The 9268 Slave device has been setup correctly and is currently detectable

Off: The 9268 Slave device cannot be detected or is off

NA: There is no current device setup on that access Number

Control Center: The control center will show the following:

- 1.) The device cannot connect or has been turned off



- 2.) The device is connected and the master device can detect the device



RF Control Panel:

To control each of the 9268-PR Device click on the little satellite picture on the screen and control panel for that unit will appear



(Satellite Picture)

Receiver ID:000003		
Outlet	Name	Controls
Power1	<input type="text" value="Sprinkler"/>	<input type="radio"/> ON <input checked="" type="radio"/> OFF
Power2	<input type="text" value="Power 2"/>	<input checked="" type="radio"/> ON <input type="radio"/> OFF
Power3	<input type="text" value="Lighting"/>	<input checked="" type="radio"/> ON <input type="radio"/> OFF
Power4	<input type="text" value="Patio"/>	<input type="radio"/> ON <input checked="" type="radio"/> OFF

(Control Panel)

From the control panel each power outlet for that device can be customized.

Hit the apply button after the changes have been made.

To turn on or off the outlet select On or Off and then hit the apply button to activate the command.

System Configuration

Configure the system configuration page is where the device will be setup.

RF Setup

Transmitter Setup Information		
Transmitter ID	Operating Frequency	Group Address
000006	430.0MHz	0x55 0xAA

RF Signal Setup			
Access Number	Receiver Name	Receiver ID	
Receiver 1	<input type="text" value="test1"/>	000002	<input type="button" value="GetID1"/> <input type="button" value="Clear1"/>
Receiver 2	<input type="text" value="test2"/>	000003	<input type="button" value="GetID2"/> <input type="button" value="Clear2"/>
Receiver 3	<input type="text" value="test3"/>	000004	<input type="button" value="GetID3"/> <input type="button" value="Clear3"/>
Receiver 4	<input type="text"/>		<input type="button" value="GetID4"/> <input type="button" value="Clear4"/>

To connect the 9268M (Master) to the 9268-PR (Slave) devices follow the following directions:

Setup the 9268-PR (Slave device)

- 1.) Hold the **“reset”** for the 9268-PR for more than 5 seconds until you hear a “beep” “beep” sound.



- 2.) Make sure there is no device already connected on the webpage of the 9268-M (Master). If a device is already in the Receiver area, hit the **“clear button”** to remove the already configured device.
- 3.) Once the device has been cleared hit the **“Get Id button”** and the 9268 will automatically detect the device.
- 4.) Once the device(s) has been setup, type in the receiver name and hit the apply button to save the changes that were made.

System Setup

Please restart for any changes to take effect	
IP Address:	192 . 168 . 1 . 75 : 80
Subnet Mask:	255 . 255 . 255 . 0
Default Gateway:	192 . 168 . 1 . 1
DNS:	168 . 95 . 192 . 1
DHCP Client:	<input checked="" type="radio"/> Enable <input type="radio"/> Disable
BEEPER:	<input checked="" type="radio"/> Enable <input type="radio"/> Disable
Http Command Verification:	<input checked="" type="radio"/> Enable <input type="radio"/> Disable
Device Name:	max9268
Release Version:	V1.3 2009/06/12
<input type="button" value="Apply"/> <input type="button" value="Cancel"/>	

The system setup section is where changes to the networking settings are made. In this section you will find the following information.

IP Address: IP Address of the IP Power 9268

Subnet Mask: Subnet mask of the IP Power 9268

Default Gateway: Default gateway information of the IP Power 9268

DNS: DNS settings of the IP Power 9268

DHCP Client: Enable or Disable Automatic DHCP

Beeper: Turns off the beeper sound of the IP Power 9268

Http Command Verification: Turns on / off the Http: commands of the device.

Device Name: Enter name for the device.

Release Version: Displays the current Firmware Version

DDNS Setup

DDNS SETUP	
DDNS Server IP:	<input type="text"/>
Your Domain:	<input type="text" value="9268.dyndns.info"/>
DDNS UserName:	<input type="text" value="aviosys"/>
DDNS Password:	<input type="password" value="●●●●●●●●"/>
Enable DDNS:	<input type="text" value="TRUE"/>
Proxy Enable:	<input type="text" value="FALSE"/>
Proxy IP:	<input type="text"/>
Proxy Port:	<input type="text" value="0"/>
<input type="button" value="SAVE"/> <input type="button" value="UPDATE"/>	

DDNS setup allows the IP Power 9268 to be used on DDNS. A DDNS account must be applied for

The following information will need to be inputed:

DDNS Server IP: This is where you Enter the DDNS Server IP

Your Domain: Enter the Domain Server from DDNS

DDNS UserName: Enter the Username from DDNS

DDNS Password: Enter the password that is used on DDNS

Enable DDNS: Select True if DDNS will be enabled

Proxy Enable: Select True if Proxy will be enabled

Proxy IP: Enter the proxy IP For DDNS here

Proxy Port: Enter the proxy port for DDNS here

Save: The save button saves the settings that have been selected

Update: Press the update button to update the settings on DYNDNS.

Email Setup

Email Setup	
Smtп Server:	aviosys.com
Smtп Port:	25
Pop3 Server:	aviosys.com
UserName:	aviosys
Password:	••••••••
Sender:	aviosys@aviosys.com
Receiver 1:	receiver@aviosys.com.tw
Receiver 2:	receiver@aviosys.com
Receiver 3:	
Subject:	Subject 9268
Mail Body:	Mail Body 9268

The Email function of the IP Power 9268 allows the device to notify the user when changes have been made, power outlets are turned on or off, or any modification of the fields.

Smtп Server: Type in the server address of the Email provider

Smtп Port: Type in the port of the SMTP email server

Pop3 Server: Type in the Pop 3 Incoming mail server

User Name: Type in the user name for the email address

Password: Type in the password for the Email Address

Sender: Type in the Sender E-mail

Receiver 1: Type in the Receiving address

Receiver 2: Type in the Receiving address

Receiver 3: Type in the Receiving address

Subject: Email subject Line

Mail body: Mail body

Save: The Save button will save the current set settings

Send: The Send command will send a test email testing the settings.

Change Password

Change Password

Change Password	
Old Password:	<input type="text"/>
New Password:	<input type="text"/>
Confirm New Password:	<input type="text"/>
<input type="button" value="Submit"/>	

The default login and password:

Login: admin

Password: 12345678

To change the password:

- 1.) Type in Old Password
- 2.) Type in the New Password
- 3.) Confirm New Password

Firmware Update

Warning: Please be sure before you are ready to update the device.

To update the device:

- 1.) Make sure that you have received the proper firmware for the IP Power Device
- 2.) Then on the web page select the Firmware Update page

Firmware Update

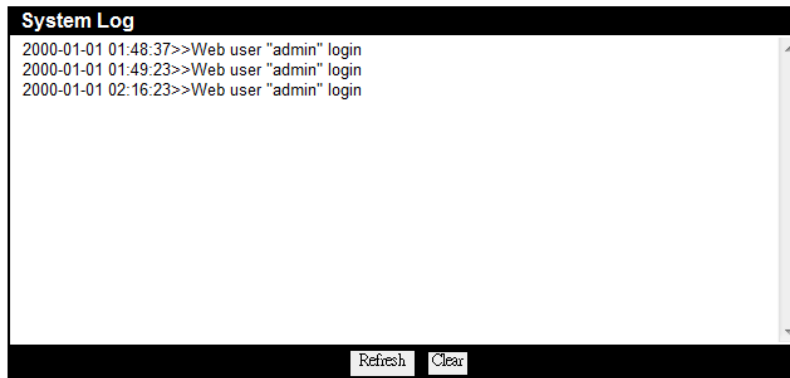
Instructions

- 1.) Please wait a few seconds for the confirmation page to load.
- 2.) Hit the continue button to continue to the update page
- 3.) Select the correct firmware, Hit the upgrade button and the system will reboot automatically.
- 4.) Then re-login to make sure that the firmware update was successfully completed.

- 3.) Read the instructions carefully and then hit the update button.
- 4.)

System Log

System Log



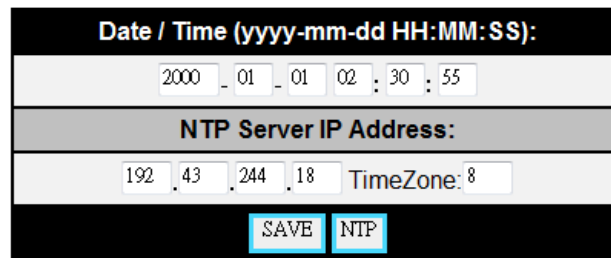
The System Log keeps track of the movements of the IP Power 9268. From this page, information on the device, which ports are being will be collected and gathered.

Refresh: Refresh will refresh the current log

Clear: Clear will clear the current log information

Change Time

Change Time



The screenshot shows a configuration form for "Date / Time (yyyy-mm-dd HH:MM:SS):". The date is set to 2000-01-01 and the time to 02:30:55. Below this, there is a section for "NTP Server IP Address:" with the IP address 192.43.244.18 and a TimeZone of 8. At the bottom, there are two buttons: "SAVE" and "NTP".

The change time feature allows the device to always have the correct time / date. In this settings, the Date / Time can either be manually entered. Or at NTP Server IP Address can be provided and the device will automatically keep track of the current time and date

Logout

Logout allows the user to logout of the current system.

7.) Frequently Asked Questions (F.A.Q)

Q1: How do I reset the device back to manufacturer default values?

Ans: In the front panel of the 9268-M, there is a reset feature that will reset the device back to manufacturer default settings. Take a pen or small pin, then press and hold for about 10-15 seconds. Once you hear a single “beep” sound the device will be reset back to manufacturer default

Q2: How come I cannot connect to my device from an outside network?

Ans: To use the device outside of LAN (Local Area Network. If a router is present you will have to port forward the Local IP Address of the 9268 so that it could be reached by the outside world. Please refer to the manual on how to accomplish this task.